



Service Manual

Washer dryer

Frontloader

AWG 327/3 WP

Model Version		Page
	AWG 327/3 WP	
	8537 327 10400	
	Technical data	2
	Spare part list	3 - 4
	Exploded view	5 - 7
	Wiring diagram	8
	Circuit diagram	9
	Program diagram	10 - 11

Technical data

Dimension

Height	85	cm
Width	59.5	cm
Depth	52	cm

Weight

Weight net	82.5	kg
without packing	81.5	kg

Main connection

Voltage	230 ± 10%	V
Frequency	50	Hz
Power Consumption	2.2	kW
Fuse rating	10	A

Drum data

Washing	50-60	rpm
Pre-spinning	120	rpm
Spinning low	500	rpm
Spinning high	800	rpm

Capacity

Loading - washing max.	5.0	kg
	dry laundry	
Loading - drying max.	2.5	kg
	dry laundry	

Heating

Type	Tubular radiator	
Rated power draft:		
- washing	1.95	kW
- drying RA1	1.0	kW
- drying RA2	0.3	kW

Drain-pump

Power consumption	34	W
Capacity	20 - 25	l/min.
Rotation speed	~ 2800	rpm
Height of draing hose	max.0.90	m
	min.0.60	m

Motor

2/16 poles with speed motor

Timer washing

Type	ELBI 1235
Basic cycles	2
- normal washing	
- delicate washing	

Capacitor

Capacity wash motor	20	μ F
---------------------	----	-----

Timer drying

Type	Eaton 8314	
drying time	2 to 104	min
cooling time	12	min

Thermostat

A - a fixed thermostat	33± 3	°C
B - a fixed thermostat	45± 3	°C
C - 2 safety thermostat	150	°C
D - an adjustable thermostat	10 - 90	°C

Drying motor

Type	85602
------	-------

Pressostat

Low level	14± 1	l
High level	17± 1	l

Push button switch unit

- Version with 5 buttons having switch for
- Rinse hold
 - Low/High speed
 - On/off
 - No spin
 - Half load

Spare part list

Model **AWG 327/3 WP**
Service No. **853732710400**
Version **853732710400**

Pos. No.	12NC Code	Description
001 0	4819 440 19451	Cabinet
011 0	4819 462 47014	Foot adjustable
024 0	4819 903 03649	Panel, rear
030 0	4819 440 19577	Table top
041 0	4819 417 19231	Hinge
054 0	4819 903 03648	Door,flap
054 1	4819 535 97024	Shaft
061 0	4819 466 89096	Counter weight top
061 1	4819 466 88794	Counter weight bottom
065 0	4819 325 18026	Insulation thermic conveyor
083 0	4819 466 47003	Friction plate
084 0	4819 903 03673	Silent bloc Motor
086 0	4819 492 68576	Spring
110 0	4819 498 69914	Handle,door
131 0	4819 903 02498	Pin
133 0	4819 466 89014	Hook
133 1	4819 903 02505	Pin
133 2	4819 404 49836	Lever Door handle
141 0	4819 450 69015	Door glass
143 0	4819 459 28288	Glassdoor frame
144 0	4819 532 78128	Frame,door glas
144 1	4819 492 38119	Strap porthole seal
144 2	4819 903 02494	Strap
190 0	4819 466 69654	Door bellow
200 0	4819 418 78192	Tub
201 0	4819 440 19371	Bottom tub
201 1	4819 532 28248	Ring tub cpl.
210 0	4819 404 49869	Crosspiece,drum
220 0	4819 418 18246	Drum
271 0	4819 358 18129	Belt
272 0	4819 528 88098	Pulley
278 0	4819 535 98468	Shaft
291 0	4819 903 03668	Gasket tub
301 0	4819 453 18999	Control panel
303 0	4819 460 78025	Plate,handle
303 1	4819 498 69836	Handle, drawer
320 0	4819 453 19371	Plate, progr.
331 0	4819 412 58303	Knob,timer
332 0	4819 410 28605	Button,push
335 0	4819 413 58931	Knob thermostat
338 0	4819 413 58933	Knob,timeswitch
351 0	4819 134 48237	Pilot lamp
401 0	4819 361 58165	Motor
401 1	4819 361 78214	Motor
420 0	4819 121 18143	Interf.filter
421 0	4819 121 18221	Capacitor 25 µ F
422 0	4819 281 68023	Tachometer speed
430 0	4819 360 18217	Pump,draining
432 0	4819 418 49662	Filter body
443 0	4819 515 48054	Fan wheel
451 0	4819 259 28778	Heating element
451 1	4819 418 38359	Heating chamber
451 2	4819 259 28773	Heating element
451 3	4819 259 28774	Heating element
490 0	4819 321 18124	Cable,mains

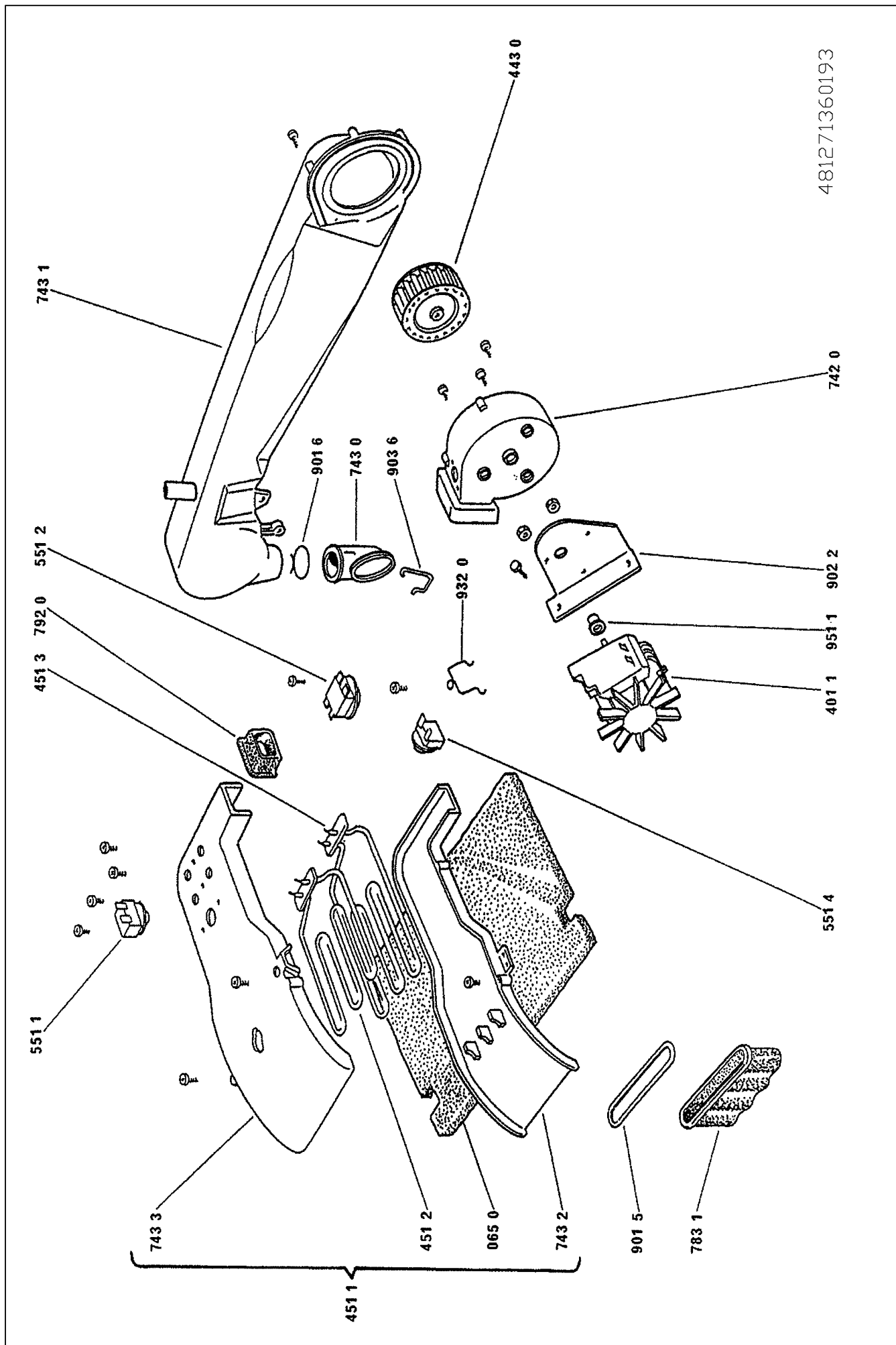
Pos. No.	12NC Code	Description
491 0	4819 290 68271	Connect.block
501 0	4819 282 18476	Timer
501 1	4819 282 18499	Timer switch dryer
521 0	4819 214 78262	Unit electrical
551 0	4819 282 48094	Thermostat 33 deg.C.fix
551 1	4819 282 28528	Thermostat with manual reset
551 2	4819 282 28527	Thermostat
551 4	4819 282 28489	Thermostat
554 0	4819 282 38042	Thermostat adjustable
572 0	4819 281 28196	Valve,magnet
583 0	4819 271 28872	Pressostat
620 0	4819 276 18222	Unit,pushbutton
630 0	4819 280 48012	Switch, door
701 0	4819 530 28712	Hose, inlet
708 0	4819 530 28867	Hose
708 1	4819 526 48308	Hose
708 2	4819 526 48211	Hose
708 3	4819 526 48212	Coupling piece
708 4	4819 530 28545	Drainhose inner
711 0	4819 418 78946	Dispenser
711 1	4819 462 79036	Cover dispenser housing
712 0	4819 418 78067	Drawer
713 0	4819 310 38651	Accessories liquid detergent
714 0	4819 418 78166	Tray bleach
718 0	4819 360 69059	Nozzle
742 0	4819 360 78276	Cover
743 0	4819 466 69941	Hose
743 1	4819 310 38836	Air guide plastic
743 2	4819 526 48311	Air guide bottom
743 3	4819 526 48309	Air guide top
754 0	4819 530 28862	Drainhose
760 0	4819 480 58082	Filter
760 1	4819 462 78861	Grip filter
781 0	4819 530 28847	Hose,draining
781 1	4819 903 02515	Hose
783 0	4819 530 28861	Hose pressostat
783 1	4819 526 48213	Air guide
792 0	4819 466 69658	Seal for blower
794 0	4819 310 38057	Gasket
794 1	4819 903 04978	Gasket
794 2	4819 532 68309	Cover filter
901 0	4819 401 18174	Clamp,hose 25-45 mm
901 3	4819 401 18351	Clamp,hose
901 5	4819 492 68475	Strap
901 6	4819 401 18463	Strap
902 0	4819 535 98469	Lever
902 1	4819 418 78606	Holder unit electronical
902 2	4819 404 49891	Holder
903 0	4819 492 68392	Clamp
903 1	4819 903 02535	Silent bloc
903 2	4819 401 18348	Holder,hose
903 3	4819 903 02466	Lever
903 4	4819 466 98404	Fastener
903 5	4819 903 02469	Rocker
903 6	4819 492 68488	Clip

Spare part list

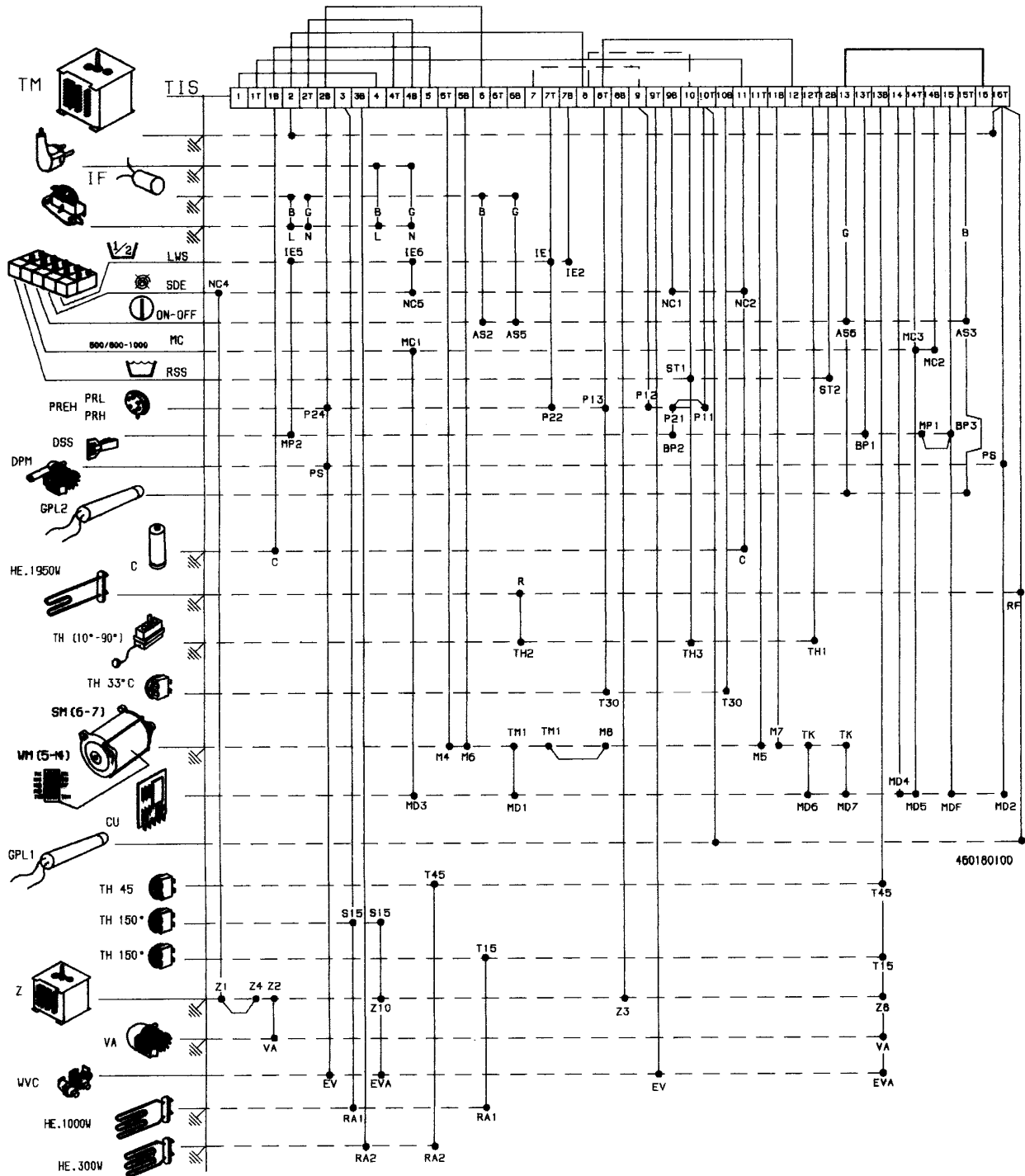
Model AWG 327/3 WP
Service No. 853732710400
Version 853732710400

Pos. No.	12NC Code	Description
904 0	4819 532 68366	Bushing
910 0	4819 502 18347	Screw
914 0	4819 505 13084	Nut
921 0	4819 466 98464	Spacer
931 0	4819 492 48141	Spring
931 1	4819 492 37027	Spring
931 2	4819 903 02471	Spring
931 5	4819 903 02542	Spring,suspens.
932 0	4819 492 68577	Spring
933 0	4819 903 03659	Spring,tension
941 0	4819 520 28034	Bearing
941 1	4819 520 28035	Bearing
951 0	4819 530 78043	Gasket
951 1	4819 530 57019	Gasket
952 0	4819 466 69816	Gasket
952 1	4819 903 02447	Gasket thermostat
990 0	4819 502 18407	Fastener counter weight
990 1	4819 466 89132	Fastener counter weight

Exploded view



Wiring diagram








- | | | | |
|-------|-----------------------|--------------|-------------------------|
| AS | ON/OFF BUTTON | SM | SPIN-DRY MOTOR |
| C | CAPACITOR | TK | TACHOMETER |
| CU | CONTROL UNIT | TH (10°-90°) | THERMOSTAT ADJUSTABLE |
| DPM | DRAIN PUMP MOTOR | TH (33°) | THERMOSTAT FIX |
| DSS | MICRO DELAY SWITCH | TH (45°) | THERMOSTAT FIX |
| EVA | DRYER WATER VALVE | TH (150°) | THERMOSTAT FIX |
| GPL1 | PILOT LAMP | TIS | TIMER CONTACTS |
| GPL 2 | PILOT LAMP | TM | TIMER MOTOR |
| HE | HEATING ELEMENT | VA | DRYER MOTOR |
| IF | INTERFERENCE FILTER | WM | WASH MOTOR |
| LWS | HALF LOAD | WVC | WATER VALVE (COLD FILL) |
| MC | LOW/HIGH SPEED | Z | DRYING TIMER |
| PREH | PRESSOSTAT | | |
| PRL | HIGH LEVEL PRESSOSTAT | B | BROWN |
| RSS | RINSE STOP SWITCH | G | BLUE |
| SDE | SPIN DELAY | ⏏ | YELLOW-GREEN |

Circuit diagram

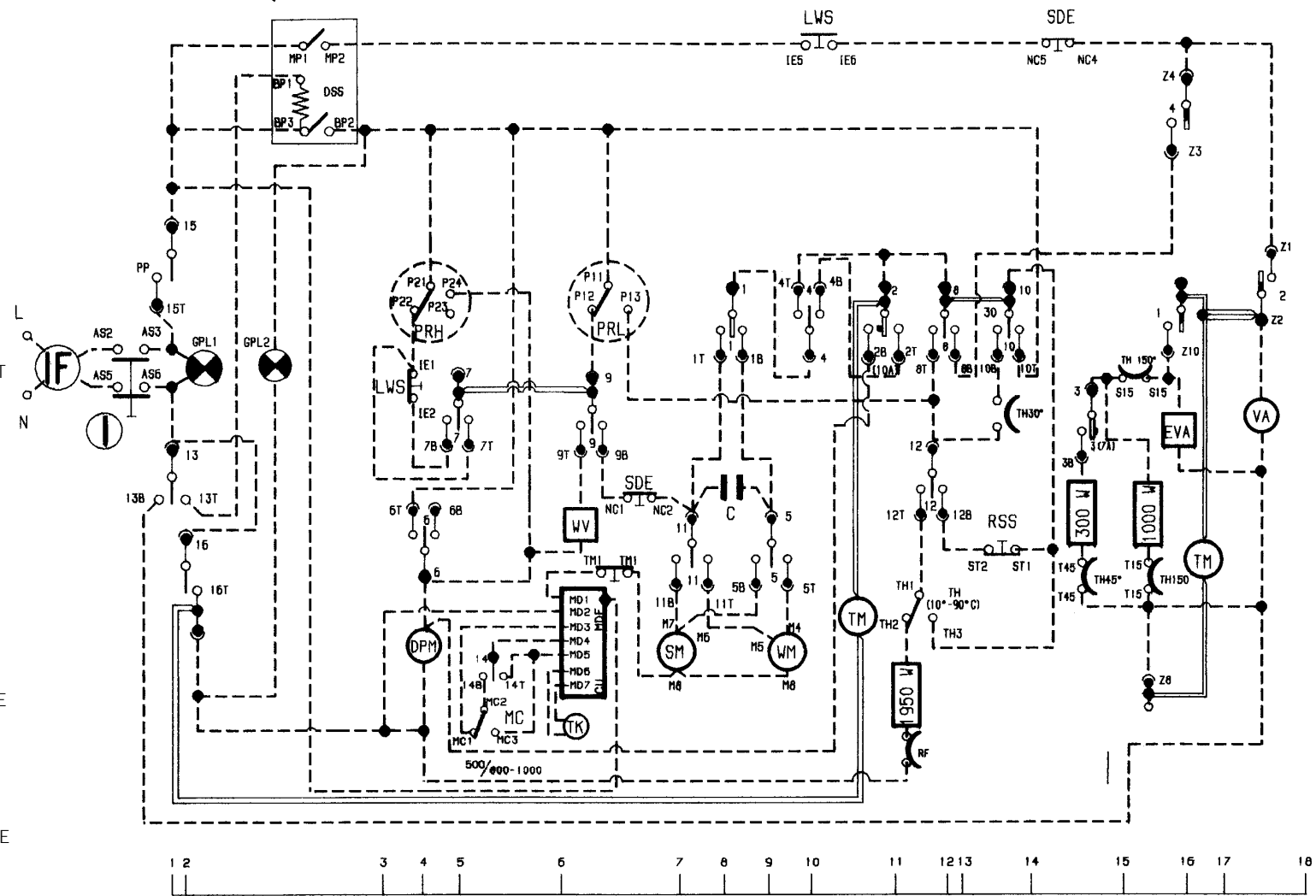
TIMER 1235  800-1000
 500

  DRYER   + TH(10°-90°C) + TEMPORIZZATORE EATON 8314

-  REVERSER CONTACTS OPERATED BY THE FAST CAMS
-  TIMER CONTACTS OPERATED BY THE SLOW CAMS
-  DOUBLE ACTION CONTACTS (OPERATED BY THE FAST CAMS DURING WASHING)

-  CONNECTIONS INSIDE THE TIMER
-  CONNECTIONS OUTSIDE THE TIMER

- NOTICE**
- THE PUSH BUTTON SWITCHES ARE SHOWN IN NOT PUSHED-IN POSITION
 - TIMER IN 60th POSITION (STOP)
 - LETTER A INDICATES THAT THE RINSE STOP SWITCH IS OPERATED BY TURNING THE POTENTIOMETER KNOB



460180100
8412 713 70128

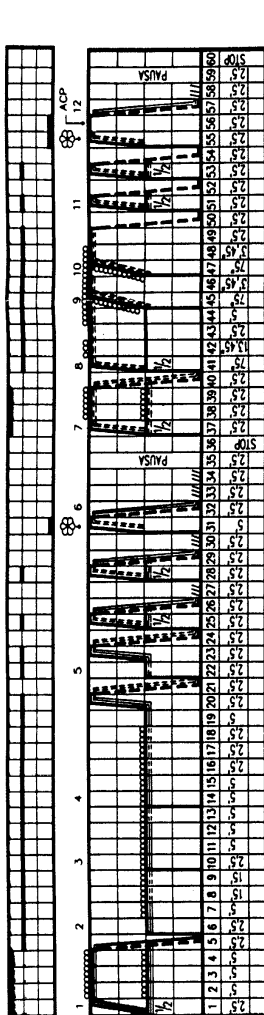
Program diagram

- 1 PL PRE-WASH
- 2 L WASH
- 3 Δ BLEACH
- 3 ⚙ SOFTENER

- I FILLING TO COMPARTMENT
- II FILLING TO COMPARTMENT
- ⊗ FILLING TO COMPARTMENT
- △ FILLING TO COMPARTMENT

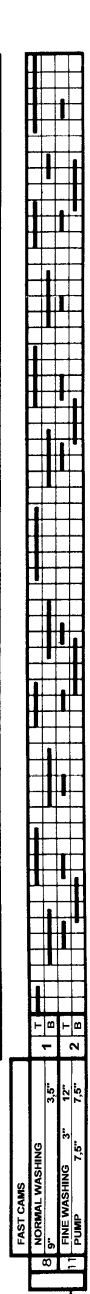
- ACPL STOP WITH WATER IN THE TUB
- ACPN STOP WITH WATER IN THE TUB SLOW RHYTHM
- D PRE-SPINNING
- B LEVEL 1 LOW
- H LEVEL 2 HIGH
- EH LEVEL 3 EXTRA HIGH
- LE HEATING
- L SLOW RHYTHM
- N NORMAL RHYTHM
- P DRAINING
- ST WITHOUT DRUM ROTATION
- S SPINNING
- SB LOW SPINNING
- SH HIGH SPINNING
- SI INTERMITTENT SPINNING
- T1 FILLING TIME LEVEL 1
- T2 FILLING TIME LEVEL 2
- T3 FILLING TIME LEVEL 3
- T4 TIME TO REACH 40 DEGREE
- T5 TIME TO REACH 60 DEGREE
- T6 TIME TO REACH 90 DEGREE
- (I) TEMPORIZED TEMPERATURE

- FILLING
- NORMAL RHYTHM
- SLOW RHYTHM
- HEATING
- STATIC HEATING
- DRAINING
- DRAINING - PRE-SPINNING
- DRAINING - SPINNING
- CLOSED CONTACT



TIMER POSITION	DURATION	FUNCTIONS OF THE INTERMEDIATE PROGRAMME START:
1	1:23	FILLING-NORMAL WASHING
2	1:45	NORMAL WASHING-HEATING
3	2:5	DRAINING-NORMAL WASHING
4	1:25	FILLING-NORMAL WASHING
5	5	NORMAL WASHING-HEATING
6	1:15	FILLING-NORMAL WASHING-HEATING
7	1:15	NORMAL WASHING-HEATING
8	1:15	FILLING-NORMAL WASHING-HEATING
9	1:15	NORMAL WASHING-HEATING
10	1:15	FILLING-NORMAL WASHING-HEATING
11	1:15	NORMAL WASHING-HEATING
12	1:15	FILLING-NORMAL WASHING-HEATING
13	1:15	NORMAL WASHING-HEATING
14	1:15	FILLING-NORMAL WASHING-HEATING
15	1:15	NORMAL WASHING-HEATING
16	1:15	FILLING-NORMAL WASHING

TIMER POSITIONEN	FUNCTIONS OF THE MACHINE
1	FILLING-NORMAL WASHING
2	NORMAL WASHING-HEATING
3	DRAINING-NORMAL WASHING
4	FILLING-NORMAL WASHING
5	NORMAL WASHING-HEATING
6	FILLING-NORMAL WASHING-HEATING
7	NORMAL WASHING-HEATING
8	FILLING-NORMAL WASHING-HEATING
9	NORMAL WASHING-HEATING
10	FILLING-NORMAL WASHING-HEATING
11	NORMAL WASHING-HEATING
12	FILLING-NORMAL WASHING-HEATING
13	NORMAL WASHING-HEATING
14	FILLING-NORMAL WASHING-HEATING
15	NORMAL WASHING-HEATING
16	FILLING-NORMAL WASHING



150"

